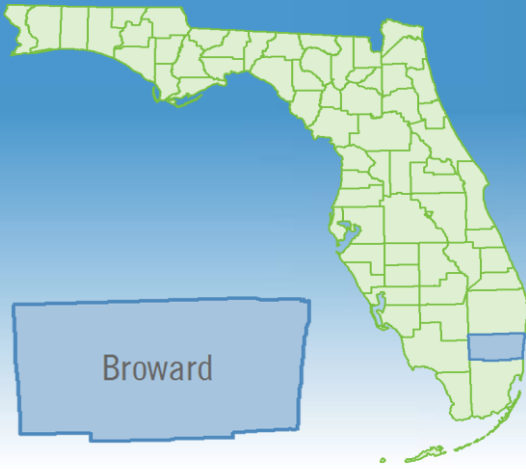


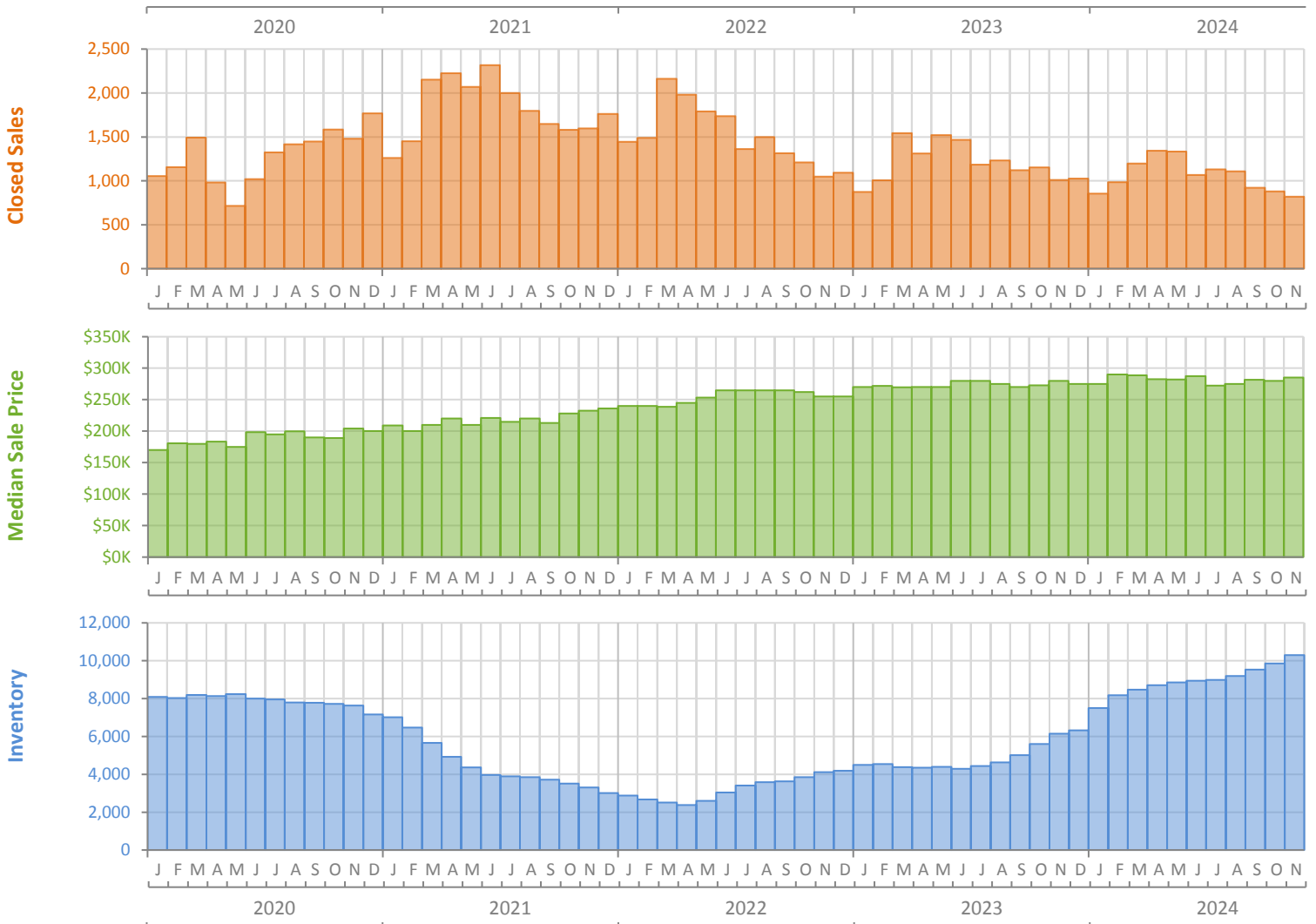
# Monthly Market Summary - November 2024

## Townhouses and Condos

### Broward County



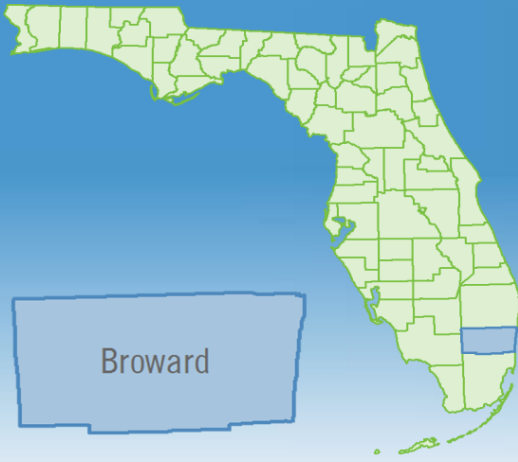
|                                       | November 2024   | November 2023   | Percent Change Year-over-Year |
|---------------------------------------|-----------------|-----------------|-------------------------------|
| Closed Sales                          | 819             | 1,009           | -18.8%                        |
| Paid in Cash                          | 407             | 534             | -23.8%                        |
| Median Sale Price                     | \$285,000       | \$280,000       | 1.8%                          |
| Average Sale Price                    | \$372,246       | \$384,871       | -3.3%                         |
| Dollar Volume                         | \$304.9 Million | \$388.3 Million | -21.5%                        |
| Med Pct. of Orig. List Price Received | 93.2%           | 95.7%           | -2.6%                         |
| Median Time to Contract               | 58 Days         | 31 Days         | 87.1%                         |
| Median Time to Sale                   | 98 Days         | 70 Days         | 40.0%                         |
| New Pending Sales                     | 944             | 1,076           | -12.3%                        |
| New Listings                          | 2,018           | 1,884           | 7.1%                          |
| Pending Inventory                     | 1,472           | 1,664           | -11.5%                        |
| Inventory (Active Listings)           | 10,299          | 6,152           | 67.4%                         |
| Months Supply of Inventory            | 9.8             | 5.1             | 92.2%                         |



# Monthly Distressed Market - November 2024

## Townhouses and Condos

### Broward County



|                 |                   | November 2024 | November 2023 | Percent Change Year-over-Year |
|-----------------|-------------------|---------------|---------------|-------------------------------|
| Traditional     | Closed Sales      | 806           | 999           | -19.3%                        |
|                 | Median Sale Price | \$285,000     | \$280,000     | 1.8%                          |
| Foreclosure/REO | Closed Sales      | 9             | 8             | 12.5%                         |
|                 | Median Sale Price | \$205,000     | \$135,450     | 51.3%                         |
| Short Sale      | Closed Sales      | 4             | 2             | 100.0%                        |
|                 | Median Sale Price | \$294,500     | \$342,500     | -14.0%                        |

