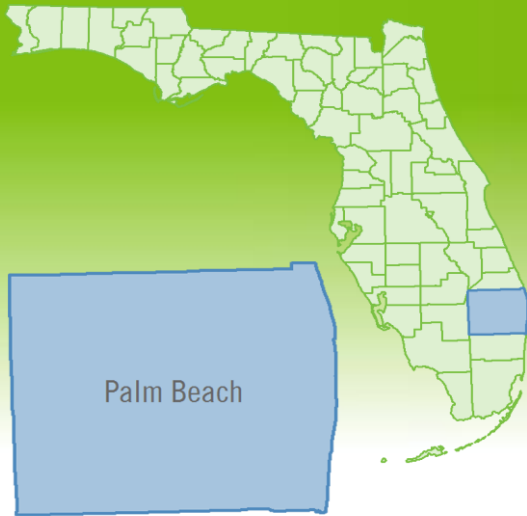


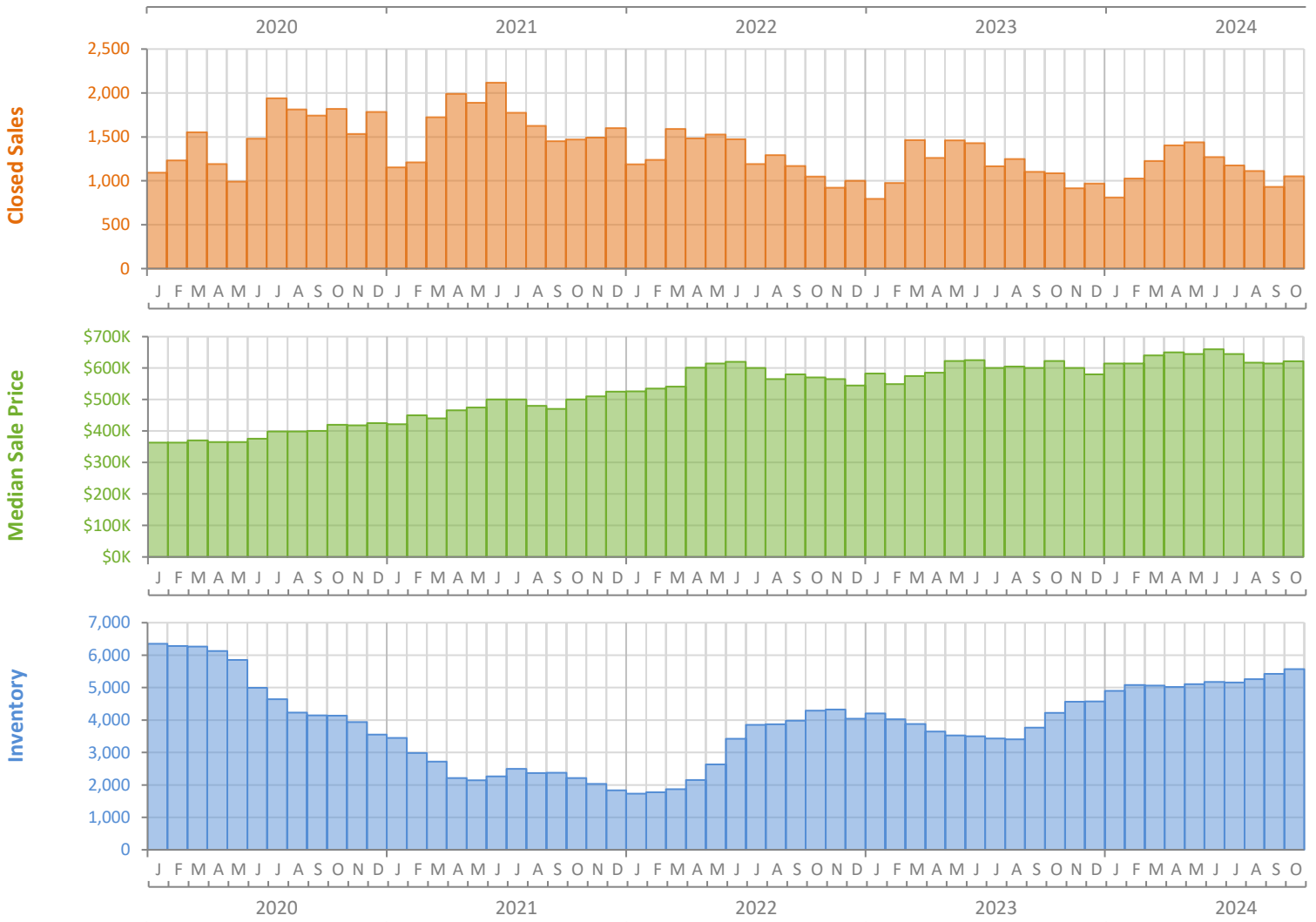
# Monthly Market Summary - October 2024

## Single-Family Homes

### Palm Beach County



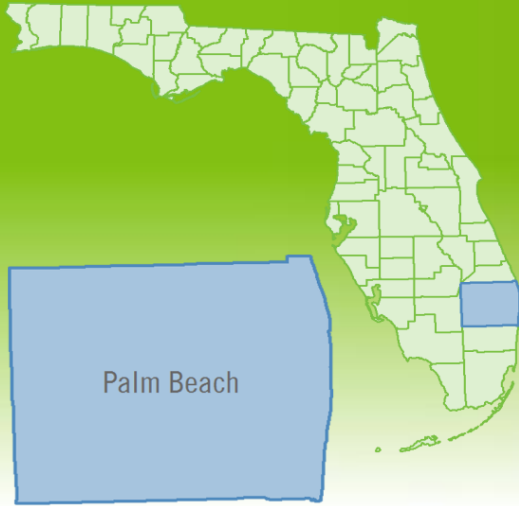
	October 2024	October 2023	Percent Change Year-over-Year
Closed Sales	1,052	1,086	-3.1%
Paid in Cash	429	520	-17.5%
Median Sale Price	\$621,500	\$622,733	-0.2%
Average Sale Price	\$1,044,846	\$908,152	15.1%
Dollar Volume	\$1.1 Billion	\$986.3 Million	11.4%
Med. Pct. of Orig. List Price Received	94.0%	96.1%	-2.2%
Median Time to Contract	45 Days	21 Days	114.3%
Median Time to Sale	87 Days	64 Days	35.9%
New Pending Sales	946	1,034	-8.5%
New Listings	1,493	1,757	-15.0%
Pending Inventory	1,404	1,506	-6.8%
Inventory (Active Listings)	5,568	4,224	31.8%
Months Supply of Inventory	5.0	3.6	38.9%



# Monthly Distressed Market - October 2024

## Single-Family Homes

### Palm Beach County



		October 2024	October 2023	Percent Change Year-over-Year
Traditional	Closed Sales	1,041	1,075	-3.2%
	Median Sale Price	\$625,000	\$625,000	0.0%
Foreclosure/REO	Closed Sales	9	9	0.0%
	Median Sale Price	\$400,000	\$390,000	2.6%
Short Sale	Closed Sales	2	2	0.0%
	Median Sale Price	\$317,000	\$251,225	26.2%

