

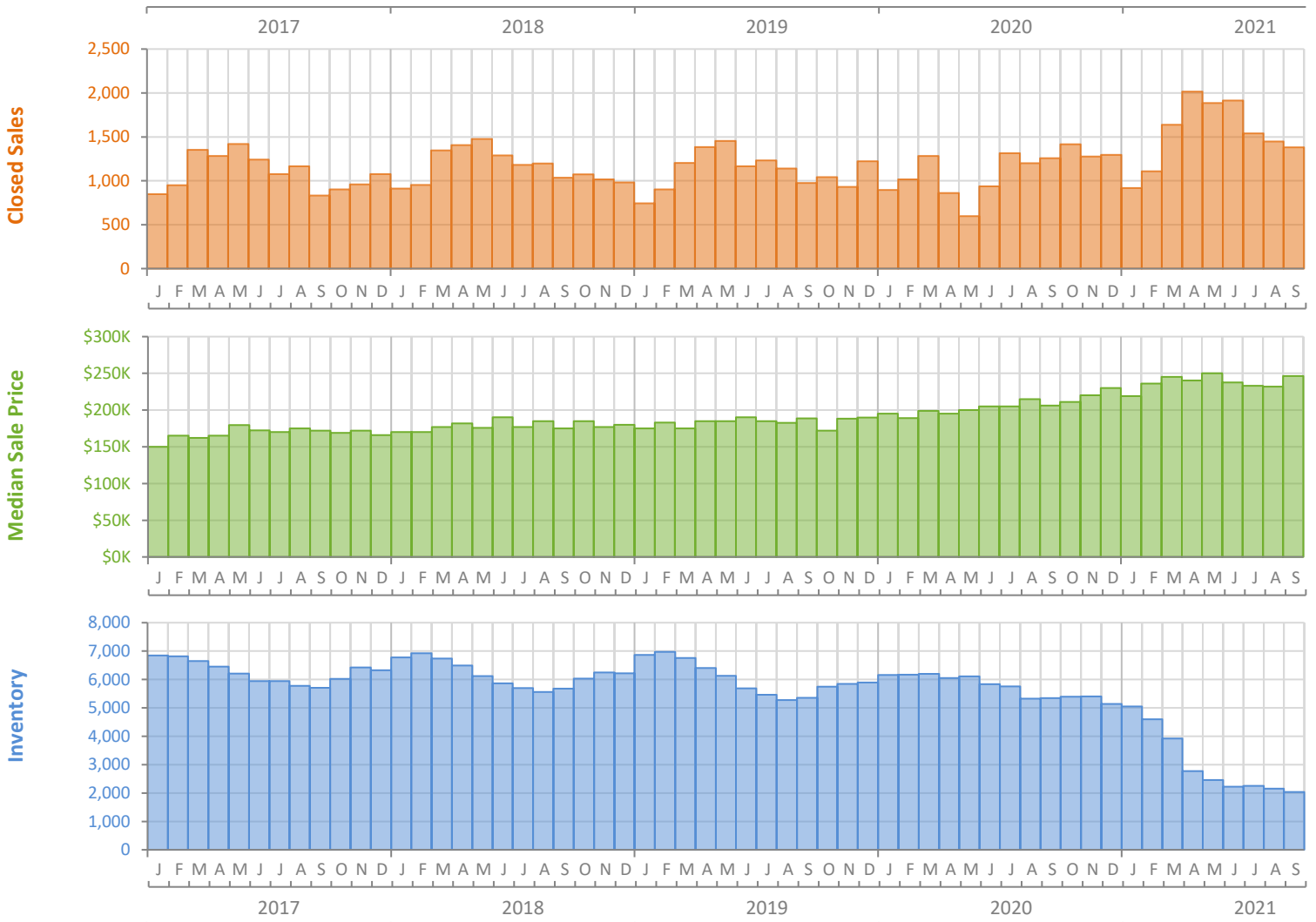
Monthly Market Summary - September 2021

Townhouses and Condos

Palm Beach County



| | September 2021 | September 2020 | Percent Change Year-over-Year |
|----------------------------------------|-----------------|-----------------|-------------------------------|
| Closed Sales | 1,380 | 1,257 | 9.8% |
| Paid in Cash | 801 | 621 | 29.0% |
| Median Sale Price | \$246,500 | \$206,250 | 19.5% |
| Average Sale Price | \$354,188 | \$332,192 | 6.6% |
| Dollar Volume | \$488.8 Million | \$417.6 Million | 17.1% |
| Med. Pct. of Orig. List Price Received | 97.9% | 94.9% | 3.2% |
| Median Time to Contract | 17 Days | 35 Days | -51.4% |
| Median Time to Sale | 60 Days | 79 Days | -24.1% |
| New Pending Sales | 1,503 | 1,545 | -2.7% |
| New Listings | 1,530 | 1,748 | -12.5% |
| Pending Inventory | 2,329 | 2,306 | 1.0% |
| Inventory (Active Listings) | 2,032 | 5,348 | -62.0% |
| Months Supply of Inventory | 1.4 | 5.1 | -72.5% |



Monthly Distressed Market - September 2021

Townhouses and Condos

Palm Beach County



| | | September 2021 | September 2020 | Percent Change Year-over-Year |
|-----------------|-------------------|----------------|----------------|-------------------------------|
| Traditional | Closed Sales | 1,371 | 1,237 | 10.8% |
| | Median Sale Price | \$247,500 | \$209,000 | 18.4% |
| Foreclosure/REO | Closed Sales | 5 | 19 | -73.7% |
| | Median Sale Price | \$203,000 | \$141,100 | 43.9% |
| Short Sale | Closed Sales | 4 | 1 | 300.0% |
| | Median Sale Price | \$140,000 | \$115,000 | 21.7% |

